



# **ILCA End of Season Championships 2025**

***Royal Cork Yacht Club, Crosshaven***

**September 27<sup>th</sup>/28<sup>th</sup> 2025**

## **NOTICE OF RACE**

The event will be organised by the Royal Cork Yacht Club in association with ILCA Ireland.

### **1. RULES**

1.1. The event is governed by the rules as defined in The Racing Rules of Sailing.

### **2. SAILING INSTRUCTIONS**

2.1. The sailing instructions will consist of the ILCA Ireland Major Event Sailing Instructions, available on the ILCA Ireland website and the event Supplementary Sailing Instructions, which will be available no later than 23:59 on September 19<sup>th</sup> at <https://www.royalcork.com/ilca-ireland-endofseason2025> and on the Official Notice Board.

### **3. COMMUNICATION**

3.1. The official notice board will be online and located at a link that will be published no later than 23:59 on September 19<sup>th</sup>.

3.2. [DP] While racing, except in an emergency, a boat shall not make voice or data transmissions and shall not receive voice or data communications that is not available to all boats.

### **4. ELIGIBILITY AND ENTRY**

4.1. The event is open to all boats of the ILCA Class.

4.2. Helms shall be a member of the Irish or other National ILCA Associations.

4.3. Eligible boats may enter by completing the entry form and paying online here:  
<https://ilcaireland.com/event/end-of-season-2025/>

4.4. Competitors under the age of 18 shall ensure that their declaration form has been signed by a responsible adult and must be submitted at registration.

4.5. To be considered an entry in the event, a boat shall complete all registration requirements and pay all fees.

4.6. Boats should enter before 23:59 on Sunday 21<sup>st</sup> September, 2025 to qualify for the early bird rate of €65. Late online entries €85 will be possible until 23:59 on Tuesday, September 23<sup>rd</sup>. Late entries (€85) will also be accepted in person only at the Royal Cork Yacht Club Registration desk located in the dinghy centre between 18:00 and 20:30 on Friday, 26<sup>th</sup> or at the discretion of the Organising Authority.

4.7. The maximum number of entries for this event is 150.

*The ILCA End of Season Championships are also kindly supported by:*

*Other sponsor logos (if required)*



## 5. FEES

5.1. The early bird entry fee is €65 until Sunday, September 21st. The normal entry fee is €85. Online Entry closes on 23:39 on September 23rd.

## 6. CREW LIMITATIONS

6.1. Does not apply.

## 7. ADVERTISING

7.1. [DP] Boats may be required to display advertising chosen and supplied by the Organising Authority.

## 8. QUALIFYING SERIES AND FINAL SERIES

8.1. Does not apply.

## 9. SCHEDULE

9.1. Registration:

Date	From	To
Fri, 26 <sup>th</sup> Sept	1800	2030
Sat, 27 <sup>th</sup> Sept	0900	1030

9.2. Briefing – A Briefing will be held at Saturday, September 27th at 1030.

9.3. Racing:

Date	Race numbers
27/09	1,2,3
28/09	4,5,6

9.4. 6 races are scheduled.

9.5. The scheduled time of the first warning signal on Saturday, September 27th is 1155. The scheduled time of the first warning signal on Sunday, September 28th is 1055.

9.6. No signal will be made after 1500 on the last day of racing.

## 10. EQUIPMENT INSPECTION

10.1. Equipment may be inspected at any time during the event.

## 11. CLOTHING AND EQUIPMENT

11.1. RRS 40.1 shall apply at all times while afloat.

11.2. All boats shall have a painter of at least 7 metres in length, made fast to the bow.

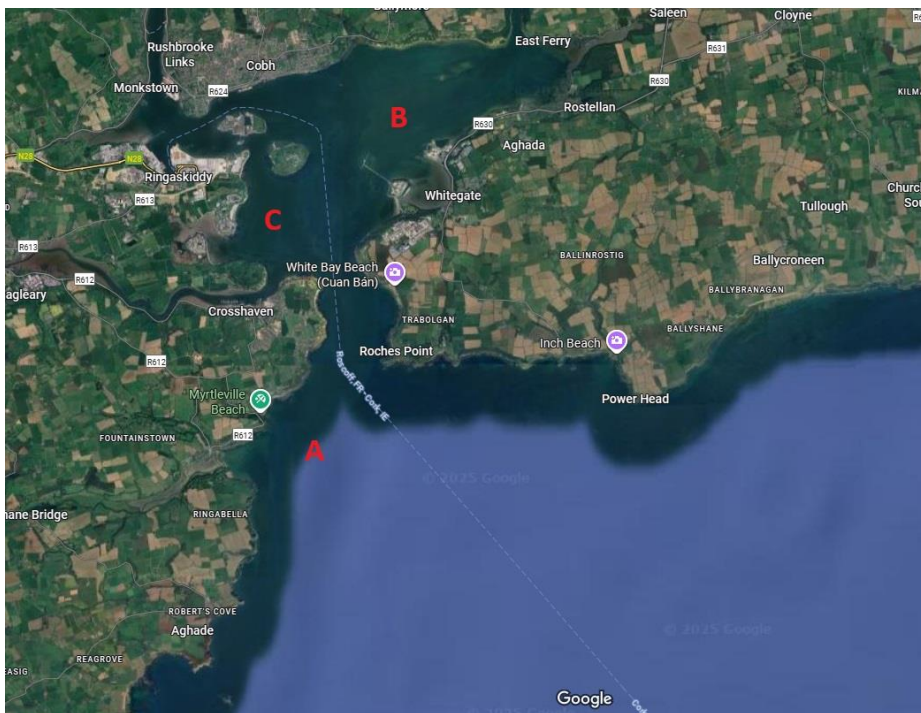
*The ILCA End of Season Championships are also kindly supported by:*

*Other sponsor logos (if required)*



## 12. VENUE

12.1. The Sailing Area will be one of three potential locations depending on conditions.



A: Outside Roche's point

B: Cuskinny

C: Curlane Bank

## 13. COURSES

13.1. The courses to be sailed will be either trapezoid or windward-leeward.

13.2. Robotic marks may be in use as course marks. All marks will be identified in Sailing Instructions.

## 14. PENALTY SYSTEM

14.1. Appendix T Arbitration shall apply to this event.

14.2. RRS Appendix P applies.

14.3. RRS P2.3 does not apply and RRS P2.2 is changed so that it applies to any penalty after the first one.

## 15. SCORING

15.1. Two races are required to be completed to constitute a series.

15.2. When *four* or more races are sailed, a boat shall discard her worst result.

*The ILCA End of Season Championships are also kindly supported by:*

*Other sponsor logos (if required)*



## 16. SUPPORT PERSON VESSELS

- 16.1. [DP] Shall register with the Organising Authority at registration and, if required, carry identification flags provided by the Organising Authority.
- 16.2. [DP] Support boats shall have an operating VHF marine radio and maintain a watch on the dedicated working channel in the event they are called by the Event Safety Officer to assist in the case of an emergency.
- 16.3. [DP] Support teams, including all support persons and support person vessels, unless otherwise instructed by a race official, shall stay 150m outside areas where boats are racing from the time of the preparatory signal for the first start until all boats have finished or retired or the race committee signals a postponement, general recall or abandonment.
- 16.4. When the engine of a support vessel is running, all support persons on that vessel, shall wear a personal flotation device and the support vessel driver shall use a kill cord.

## 17. CHARTERED OR LOANED BOATS

- 17.1. Does not apply.

## 18. BERTHING

- 18.1. [DP] Boats shall be kept in their assigned places in the dinghy park.

## 19. HAUL-OUT RESTRICTIONS

- 19.1. Does not apply.

## 20. DIVING EQUIPMENT AND PLASTIC POOL

- 20.1. Does not apply.

## 21. DATA PROTECTION

- 21.1. The data processing policy is available on the class website.

## 22. RISK STATEMENT

- 22.1. 22.1 Rule 3 of the Racing Rules of Sailing states: “The responsibility for a boat’s decision to participate in a race or to continue to race is hers alone”

Sailing by its nature is an unpredictable sport and therefore inherently involves an element of risk. By taking part in the event, each competitor agrees and acknowledges that:

- (a) They are aware of the inherent element of risk involved in the sport and accept responsibility for the exposure of themselves, their crew and their boat to such inherent risk whilst taking part in the event;
- (b) They are responsible for the safety of themselves, their crew, their boat and their other property whether afloat or ashore;

*The ILCA End of Season Championships are also kindly supported by:*

*Other sponsor logos (if required)*



- (c) They accept responsibility for any injury, damage or loss to the extent caused by their own actions or omissions;
- (d) Their boat is in good order, equipped to sail in the event and they are fit to participate;
- (e) The provision of a race management team, patrol boats and other officials and volunteers by the event organiser does not relieve them of their own responsibilities.
- (f) The provision of patrol boat cover is limited to such assistance, particularly in extreme weather conditions as can be practically provided in the circumstances.
- (g) It is their responsibility to familiarise themselves with any risks specific to this venue or this event drawn to their attention in any rules or information produced for the venue or event and to attend any safety briefing held for the event.

## 23. INSURANCE

23.1. Each participating boat shall be insured with valid third-party liability insurance with a minimum cover of **€3,000,000 EUR** per incident or the equivalent.

## 24. PRIZES

24.1. Prizes will be given as follows: First, Second and Third in each class. Further Prizes may be awarded.

## 25. FURTHER INFORMATION

25.1. For further information please contact [rcyclasers@gmail.com](mailto:rcyclasers@gmail.com)

### END OF NOTICE OF RACE

**The Notation [NP] in a rule means that a boat may not protest another boat for breaking that rule. This changes RRS 60.1(a)**

### COMPETITORS INFORMATION – Not part of Notice of Race

**Parking Entrance:** Western entrance to the carpark will be available to competitors for trailer parking along with additional parking as directed by OA team.

**Camping facilities:** Camping is available on club grounds located to the eastern side of the clubhouse.

**Warning:** boats with sub-standard launching trolleys may be prevented from launching on day 1.

**Support boat launching:** This should be completed on Friday evening at the Royal Cork slipway or at the public slipway at Castle Point.

*The ILCA End of Season Championships are also kindly supported by:*

*Other sponsor logos (if required)*



Accommodation is also available from our partners in Crosshaven House or Carraigaline Court Hotel. Group bookings can be made.

*The ILCA End of Season Championships are also kindly supported by:*

*Other sponsor logos (if required)*